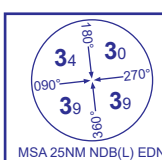
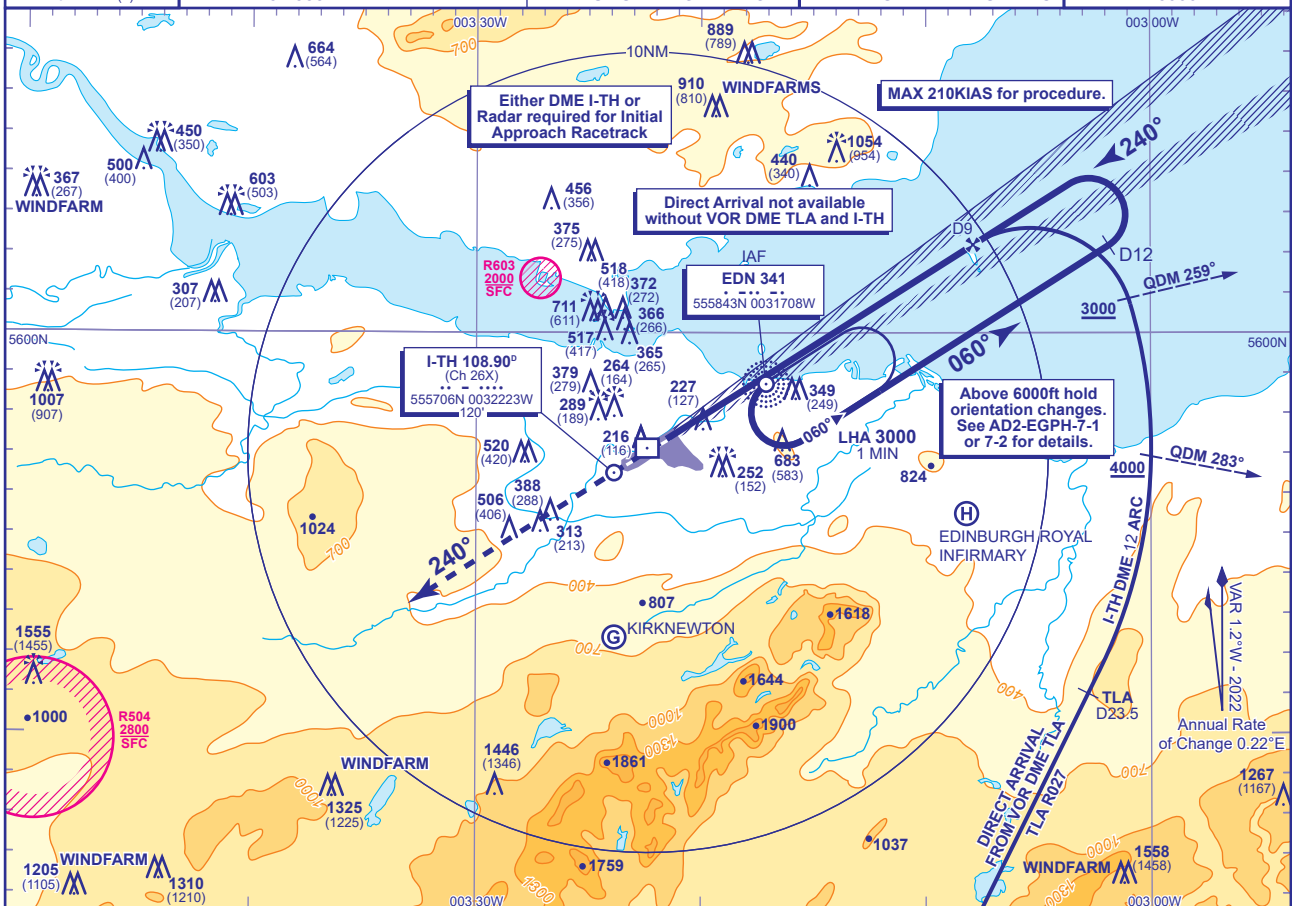


EDINBURGH
ILS/DME/NDB(L)
RWY 24
(ACFT CAT A,B,C,D)



APP	121.205	EDINBURGH APPROACH	AD ELEVATION	112
TWR	118.705	EDINBURGH TOWER	THR ELEVATION	100
	121.755	EDINBURGH GROUND	OBSTACLE ELEVATION 1558 AMSL (1458) (ABOVE THR)	
RAD	121.205, 128.980	EDINBURGH RADAR		
ATIS	131.355	EDINBURGH INFORMATION	BEARINGS ARE MAGNETIC	

TRANSITION ALTITUDE
6000



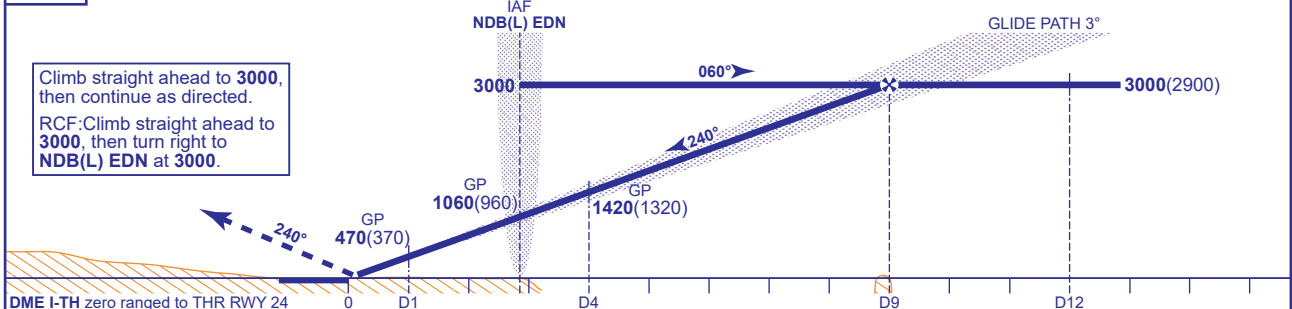
RECOMMENDED PROFILE GLIDE PATH 3°: 320FT/NM

DME I-TH	8	7	6	5	4	3	2	1
ALT(HGT)	2700(2600)	2380(2280)	2060(1960)	1740(1640)	1420(1320)	1110(1010)	790(690)	470(370)

RDH 50 Arrival **not below 3000** or higher **MSA**. Shuttle in hold if necessary.

Climb straight ahead to **3000**, then continue as directed.

RCF: Climb straight ahead to **3000**, then turn right to **NDB(L) EDN at 3000**.



Aircraft Category		A	B	C	D	Rate of descent	G/S KT	160	140	120	100	80
OCA (OCH)	CAT I	245(145)	253(153)	261(161)	272(172)		FT/MIN	850	740	640	530	420
	CAT II	153(53)	161(61)	173(73)	185(85)							
VM(C)OCA (OCH AAL)	Total Area	780(668)	980(868)	1470(1358)	2020(1908)							
	North of RWY 06/24	780(668)	830(718)	1150(1038)	1210(1098)							

DIRECT ARRIVAL VIA VOR DME TLA From overhead VOR DME TLA (IAF) as cleared, fly outbound on VOR TLA R027 descending **not below 6000**. From TLA VOR R027 DME 13 continue descent to cross EDN NDB(L) QDM 283° **not below 4000**. (See plan for continuation). Nominal track distance from VOR DME TLA to lead radial NDB(L) EDN QDM 259° is 32NM. TLA VOR R027 becomes tangential to nominal I-T H DME 12 arc at TLA DME 23.5.

AIRCRAFT UNABLE TO RECEIVE DME Advise ATC. Radar Ranges will be provided at 12NM outbound and at 9NM inbound.

NOTE 1 Direct arrival in the event of loss of I-TH DME before establishing on LOC climb to **3000** and request ATC clearance to revert to main procedure overhead NDB(L) EDN.

2 See AD2.22 / 1.d and 4.a for speed restrictions.

CHANGE (8/25): VM(C)OCA (OCH AAL) MINIMA. AD ELEVATION.

AERO INFO DATE 12 MAY 25

AD 2-EGPH-8-4